

American Legend 7

A fixed-indexed annuity from Great American Life Insurance Company®




GREATAMERICAN
INSURANCE GROUP | Annuities

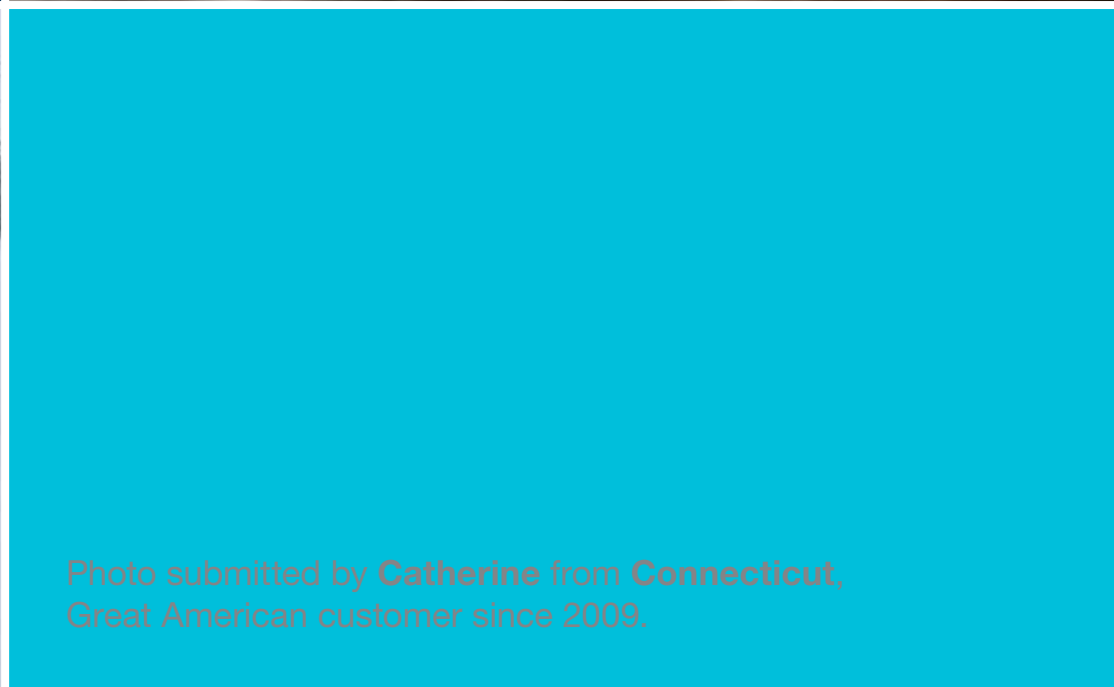


Photo submitted by **Catherine** from **Connecticut**,
Great American customer since 2009.

Help Secure Your Retirement With The American Legend 7

A fixed-indexed annuity that offers:



Growth opportunity

You can allocate your money to interest strategies that may help you accumulate more assets for retirement.



Protection from loss

Regardless of market conditions, you won't lose the money you contribute to your annuity unless you take a withdrawal or surrender your contract during its early withdrawal charge period.



Guaranteed retirement income

When you're ready to turn the money you've accumulated in your annuity into retirement income, you can select from a variety of payout options, including an income stream that will last for the rest of your life.

Annuity Basics

Simply put, an annuity is a contract between you and an insurance company. It is a long-term financial vehicle that's designed to protect and grow your money, and then provide a stream of income during your retirement. In fact, other than pensions, **annuities are the only products that provide guaranteed lifetime income.**

Great American Insurance Group is committed to offering annuities that are simpler and easier to understand – helping to achieve your goals with no surprises.





Pick Your Path To Growth

Fixed-indexed annuities offer multiple interest strategies to help you build your savings.

Indexed strategies offer you the unique opportunity to earn interest based, in part, on market performance without the risk of market loss. A **declared rate strategy** allows you to grow your money at a fixed interest rate that is set at the beginning of each one-year term.

You have the flexibility to choose the strategies that are right for you. We know your needs may change over time, so you can revisit your strategy selections at the end of each one-year term.

How Do Indexed Strategies Work?

It's simple. Funds in an indexed strategy earn interest based, in part, on the positive performance of an external index, such as the S&P 500[®]. Interest is credited on the last day of each one-year term and is **guaranteed to never be less than 0%**.

The American Legend[®] 7 offers point-to-point and monthly sum indexed strategies.

The **point-to-point** strategies compare the closing value of an index at the end of a one-year term to the closing value on the first day of the term. If the result is positive, interest is credited. If the result is negative, the credited interest rate is 0%. The amount of interest credited at the end of the term is limited by either a cap or a participation rate.

- A **cap** is the maximum interest rate that will be credited for a one-year term.
- A **participation rate** is the percentage of a positive index change that will be credited for a one-year term.

The **monthly sum** indexed strategy compares the closing value of the index at the end of a month-long period to the closing value at the beginning of that month-long period. Positive monthly changes are subject to a cap, but negative monthly changes are not limited. The credited interest rate is the sum of the 12 monthly index changes for that term, but not less than 0%.

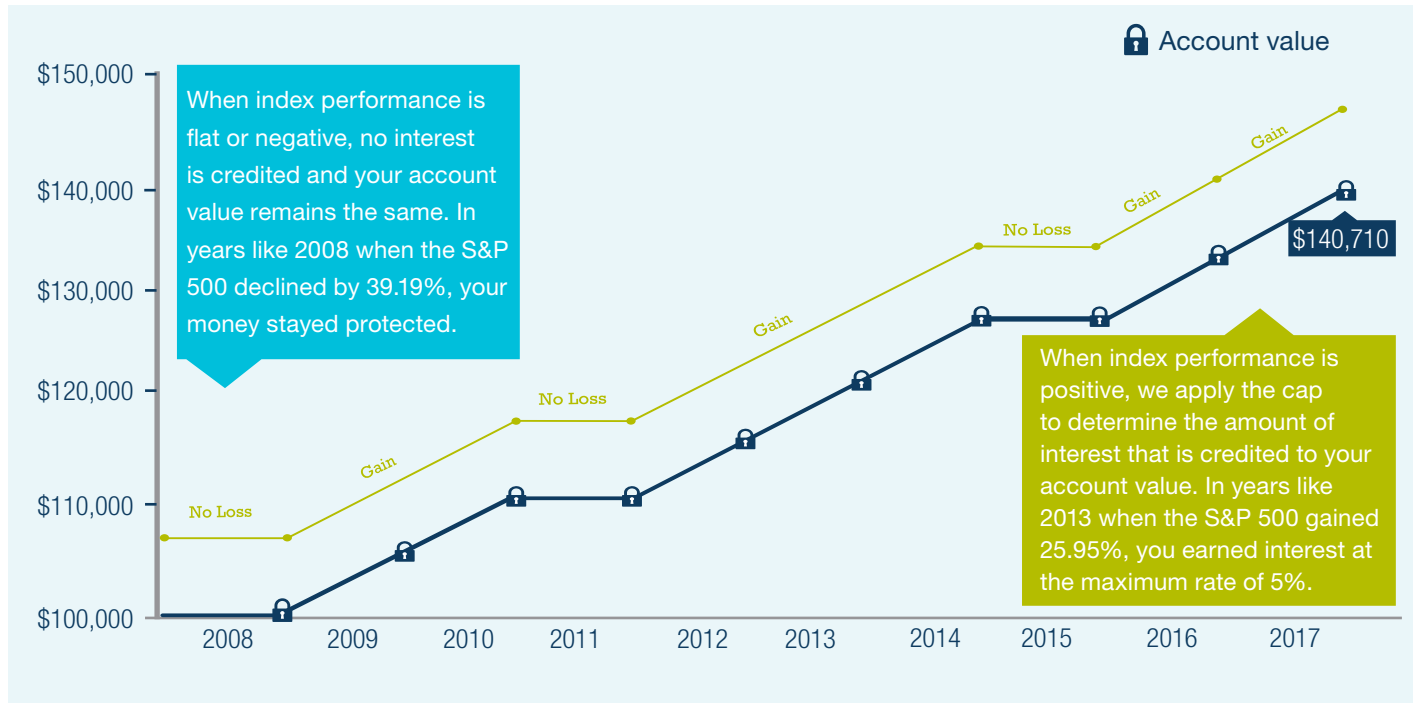
Any interest credited to your account value is locked in at the end of each one-year term and cannot be lost due to future market performance.

Balancing Growth And Protection

Let's say you purchased an American Legend® 7 with \$100,000 and allocated your entire purchase payment to a point-to-point strategy with a 5% cap.

The example uses historical S&P 500® Index returns to show how your annuity account value would have grown, while your principal and earnings were protected from market loss. It assumes the 5% cap applied during the entire 10-year period and you did not change your strategy allocation during that time.

How your money can grow with a point-to-point indexed strategy



How your rate is calculated

When index performance is positive, interest is credited, up to the cap. When index performance is flat or negative, the credited interest rate is 0%.

	2008	2009	2010	2011	2012	2013	2014	2015	2016	2017
S&P 500 Index return	-39.19%	24.17%	13.12%	-0.46%	16.30%	25.95%	13.88%	-3.14%	13.22%	17.99%
Interest credited (with 5% cap)	0.00%	5.00%	5.00%	0.00%	5.00%	5.00%	5.00%	0.00%	5.00%	5.00%

While past performance does not guarantee future results, with a fixed-indexed annuity, you can be certain that your money will be protected against loss if you hold your annuity through the early withdrawal charge period.

The hypothetical fixed-indexed annuity in this example uses the S&P 500® index and the annual point-to-point method with one-year terms beginning on December 20 to calculate the indexed interest rate for each term. For purposes of this example, we assume \$100,000 is allocated to a strategy with a 5% cap. However, during the period shown in the example, the actual caps that we applied to our fixed-indexed annuities varied from term to term and ranged from 3.25% to 10%. Caps are subject to change. Indexed interest is credited only on amounts held for the entire term. Terms start on the 6th and 20th of each month. A different term start date would affect the performance of the hypothetical fixed-indexed annuity and result in higher or lower annuity account values than those shown in this example. The term for a purchase payment begins on the next start date after we receive that purchase payment. This example assumes no money is withdrawn from the annuity. Early withdrawal charges will apply if money is withdrawn during the early withdrawal charge period. For contracts with a market value adjustment feature, that adjustment will apply if money is withdrawn during the early withdrawal charge period.

When you buy a fixed-indexed annuity, you own an insurance contract. You are not buying shares of any stock or index.

Additional Benefits



Tax treatment that allows faster growth

You don't pay taxes on the interest your contract earns until you start receiving payments or take a withdrawal, so your money can grow at a faster rate than it would in a taxable product.



Guaranteed retirement income

With the average retirement lasting 18 years, you may worry about outliving your savings. The American Legend® 7 provides the opportunity to turn the money you've accumulated in your annuity into a steady stream of retirement income. Depending on which payout option you choose, income benefit payments are made for a specific number of years or for life.

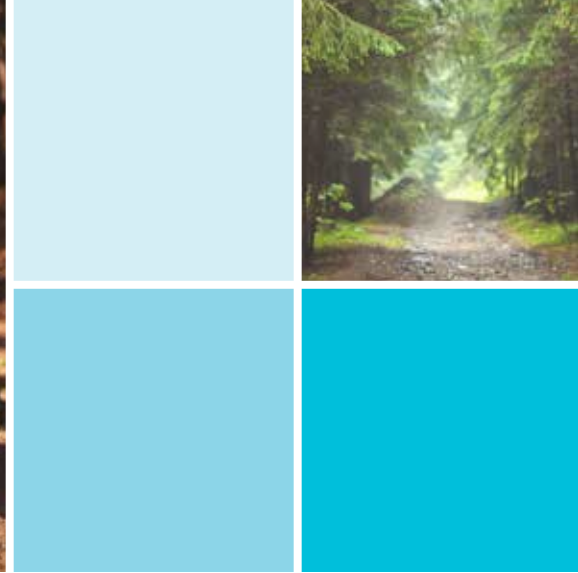


Protection for your loved ones

No one likes to think about it, but part of achieving peace of mind is knowing what would happen to your money if you pass away unexpectedly. With the American Legend 7, any death benefit is paid directly to your beneficiaries, which allows them to receive your financial legacy without the cost and delays of probate.

This information is not intended or written to be used as legal or tax advice. It was written solely to provide general information and support the sale of annuity products. You should seek advice on legal or tax questions based on your particular circumstances from an attorney or tax advisor.

For qualified contracts, the full amount withdrawn is generally subject to income tax. For other contracts, only the gains are subject to income tax. If you are under age 59½, the taxable amount is also generally subject to a 10% federal penalty tax.



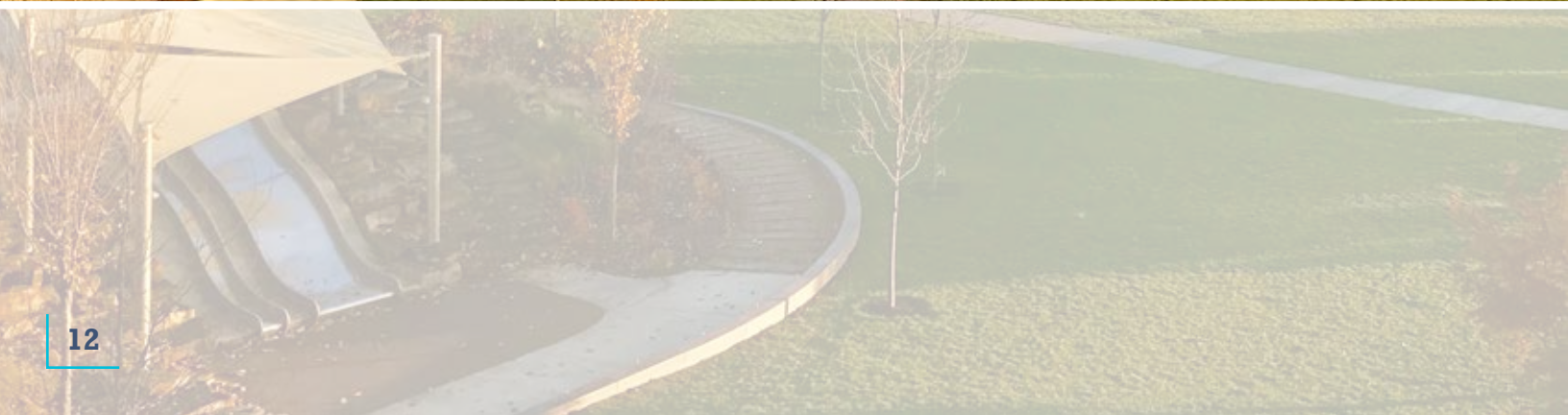
Consider Your Liquidity Needs

The American Legend 7 is intended to be a long-term product. However, you will have access to a portion of your money each year with penalty-free withdrawals.

During the first contract year, you may withdraw up to 10% of your purchase payments. After the first contract year, 10% of the account value on the most recent contract anniversary may be withdrawn.

It's important to note withdrawals in excess of this amount may be subject to **early withdrawal charges** and a **market value adjustment**. Early withdrawal charges and market value adjustments end after seven years.

Our simple promise to you:
superior service and annuities
that are easier to understand.



Great American. It Pays To Keep Things Simple.SM

Serving with great pride for more than a century

With a heritage dating back to 1872, our insurance companies have a long history of helping people achieve their financial goals. Great American Life[®] is a member of Great American Insurance Group and a subsidiary of American Financial Group, Inc. (AFG), which is publicly traded on the New York Stock Exchange (NYSE: AFG). Headquartered in Cincinnati, Ohio, AFG has assets of more than \$60 billion as of December 31, 2017.

The importance of financial strength

With medical advances in health care leading to increased longevity, it's possible your retirement may last longer than 30 years. That's why it's important to work with a company that has long-term financial strength and experience. Great American Life Insurance Company[®] is proud to be rated **"A" (Excellent)** by A.M. Best and **"A+"** by Standard & Poor's.

A.M. Best rating affirmed August 11, 2017. "A" (Excellent) is third highest of 16 categories. S&P rating affirmed February 8, 2017. "A+" is fifth highest of 21 categories.

American Legend 7 Features

Issue ages	<p>Qualified: 0–85 Non-qualified: 0–85 Inherited IRA: 0–75 Inherited non-qualified: 0–75</p>																		
Purchase payments	<p>You can purchase this annuity with an initial purchase payment of \$10,000 or more. You can add to your annuity at any time with additional purchase payments of at least \$2,000.</p>																		
Fees	<p>There are no upfront charges. All your money goes to work for you.</p>																		
Interest strategies	<ul style="list-style-type: none"> ➤ Declared rate ➤ S&P 500® 1-year point-to-point with cap ➤ S&P 500® 1-year monthly sum with cap ➤ S&P 500 Risk Control 1-year point-to-point with participation rate ➤ SPDR® Gold Shares 1-year point-to-point with cap ➤ S&P U.S. Retiree Spending 1-year point-to-point with participation rate ➤ iShares U.S. Real Estate 1-year point-to-point with cap <p>Available strategies may vary by state and your affiliated broker/dealer, if any.</p>																		
Term	<p>Each strategy offers a one-year term.</p>																		
Penalty-free withdrawals	<p>During the first contract year, you may withdraw up to 10% of your purchase payments. After the first contract year, 10% of the account value on the most recent contract anniversary may be withdrawn. Amounts withdrawn in excess of the penalty-free withdrawal allowance may be subject to early withdrawal charges and a market value adjustment.</p>																		
Early withdrawal charges	<p>During the first seven contract years, an early withdrawal charge starting at 9% is applied to surrenders and withdrawals that exceed the 10% penalty-free amount. All charges end after seven years.</p>																		
Market value adjustment	<table border="1"> <thead> <tr> <th>Contract year</th> <th>1</th> <th>2</th> <th>3</th> <th>4</th> <th>5</th> <th>6</th> <th>7</th> <th>8+</th> </tr> </thead> <tbody> <tr> <td>Early withdrawal charge</td> <td>9%</td> <td>8%</td> <td>7%</td> <td>6%</td> <td>5%</td> <td>4%</td> <td>3%</td> <td>0%</td> </tr> </tbody> </table>	Contract year	1	2	3	4	5	6	7	8+	Early withdrawal charge	9%	8%	7%	6%	5%	4%	3%	0%
	Contract year	1	2	3	4	5	6	7	8+										
Early withdrawal charge	9%	8%	7%	6%	5%	4%	3%	0%											
<p>A market value adjustment (MVA) will also apply if you surrender your contract during the first seven years. The MVA is calculated by comparing the value of a specific index at the time we receive each purchase payment to the value of the index when you choose to surrender your contract. This can result in an increase to your surrender value during a period of decreasing rates, or a decrease to your surrender value during a period of increasing rates. The MVA will also apply to withdrawals in excess of the 10% free-withdrawal allowance during the first seven contract years.</p>																			

<p>Guaranteed minimum surrender value</p>	<p>The amount payable to you if you surrender your contract will never be less than the Guaranteed Minimum Surrender Value (GMSV). The GMSV is based on 87.5% of your purchase payments, minus withdrawals (except those made to pay rider charges, early withdrawal charges and negative MVAs) and plus interest credited daily at a guaranteed minimum rate of 1%.</p> <p>This means, in certain situations when your contract earns no interest due to flat or declining index performance, the amount payable upon surrender may still be greater than the amount of money you contributed to your annuity. It's important to remember the GMSV is reduced by prior withdrawals.</p>
<p>Income payout options</p>	<p>Fixed period: You receive income benefit payments for a fixed period of time that you select.</p> <p>Life or life with a minimum fixed period: You receive income benefit payments for life. If you select a minimum fixed period of time and pass away before the end of the period, the remaining income benefit payments are paid to the person you designate.</p> <p>Joint and one-half survivor: Income benefit payments are guaranteed for your life and the life of a designated joint annuitant. If you are survived by the joint annuitant, he or she will receive 50% of the income benefit payment for life.</p>
<p>Included waiver riders</p>	<p>Extended care waiver rider: After the first contract year, if you are confined to a nursing home or long-term care facility for at least 90 consecutive days, you have the option to withdraw up to 100% of the account value without incurring an early withdrawal charge.</p> <p>Terminal illness waiver rider: After the first contract year, if you are diagnosed by a physician as having a terminal illness, you have the option to withdraw up to 100% of the account value without incurring an early withdrawal charge. A terminal illness is defined as having a prognosis of survival of 12 months or less, or a longer period as required by state law.</p> <p>Extended care and terminal illness waiver riders are not available in Massachusetts. In California, the Extended Care Waiver Rider has been replaced with the Waiver of Early Withdrawal Charges for Facility Care or Home Care or Community-Based Services Rider, which provides for a waiver of early withdrawal charges under an expanded variety of circumstances.</p>
<p>Optional riders</p>	<p>For additional benefits, you may have the option to add one of the following riders to your contract:</p> <ul style="list-style-type: none"> ➤ Inheritance EnhancerSM death benefit rider ➤ IncomeSecureSM income rider <p>Riders are available for an annual charge. For more information, talk with your financial professional or refer to the rider brochures.</p>



The S&P 500 Risk Control 10% Index refers to the S&P 500 Average Daily Risk Control 10% USD Price Return Index. For more information, visit US.SPIndices.com and search keyword SPXAV10P. For more information on the S&P U.S. Retiree Spending Index, visit US.SPIndices.com and search keyword SPRETIRE. For more information on the iShares U.S. Real Estate ETF, visit iShares.com and search ticker symbol IYR. SPDR Gold Shares refer to units of interest in an exchange traded fund that reflect the market value of gold bullion.

The S&P 500 Index, S&P U.S. Retiree Spending Index and S&P 500 Average Daily Risk Control 10% Price Return index are products of S&P Dow Jones Indices LLC (“SPDJI”), and have been licensed for use by Great American Life. Standard & Poor’s®, S&P®, S&P 500®, S&P 500 Average Daily Risk Control 10%™, SPDR® and STANDARD & POOR’S DEPOSITORY RECEIPTS® are trademarks of Standard & Poor’s Financial Services LLC (“S&P”); Dow Jones® is a registered trademark of Dow Jones Trademark Holdings LLC (“Dow Jones”); and these trademarks have been licensed for use by SPDJI and sublicensed for certain purposes by Great American Life. Great American Life’s American Legend® 7 is not sponsored, endorsed, sold or promoted by SPDJI, Dow Jones, S&P, their respective affiliates, and none of such parties make any representation regarding the advisability of investing in such product(s) nor do they have any liability for any errors, omissions, or interruptions of the S&P 500 Index, the S&P U.S. Retiree Spending Index or the S&P 500 Average Daily Risk Control 10% Price Return Index.

The iShares U.S. Real Estate ETF is distributed by BlackRock Investments, LLC. iShares®, BLACKROCK®, and the corresponding logos are registered and unregistered trademarks of BlackRock, Inc. and its affiliates (“BlackRock”), and these trademarks have been licensed for certain purposes by Great American Life Insurance Company. Great American Life Insurance Company annuity products are not sponsored, endorsed, sold or promoted by BlackRock, and purchasers of an annuity from Great American Life Insurance Company do not acquire any interest in the iShares U.S. Real Estate ETF nor enter into any relationship of any kind with BlackRock. BlackRock makes no representation or warranty, express or implied, to the owners of any Great American Life Insurance Company annuity product or any member of the public regarding the advisability of purchasing an annuity, nor does it have any liability for any errors, omissions, interruptions or use of the iShares U.S. Real Estate ETF or any data related thereto.

Great American Life Insurance Company is not an investment adviser and the information provided in this document is not investment advice. You should consult your investment professional for advice based on your personal circumstances and financial situation.

Please note, this is a general description of the product. Please read your contract, including the endorsements and riders, for definitions and complete terms and conditions, as this is a summary of the annuity’s features. For use with contract form P1470017NW and rider forms R6032310NW, R6032410NW (not available in Massachusetts), R6036711NW and R6042513NW. Contract and rider form numbers may vary by state. Products and features may vary by state, and may not be available in all states. See specific product disclosure document for details.

All guarantees based on the claims-paying ability of Great American Life.

Products issued by Great American Life Insurance Company®, member of Great American Insurance Group, Cincinnati, Ohio. © 2018 by Great American Life Insurance Company. All rights reserved. GAIG.com.

Not FDIC or NCUSIF Insured	No Bank or Credit Union Guarantee	May Lose Value	Not Insured by any Federal Government Agency	Not a Deposit
----------------------------	-----------------------------------	----------------	--	---------------