

# Comparative Annuity Reports

Your guide to comparing data about Single Premium Immediate Annuity programs

February 2020

1-800-872-6684

[www.immediateannuities.com/comparativeannuityreports/](http://www.immediateannuities.com/comparativeannuityreports/)

Volume 41

Issue 2

## SUMMARY OF IMMEDIATE ANNUITY PAYOUTS

© Comparative Annuity Reports, All Rights Reserved

Period (Term) <u>Certain Only</u>	<u>Average</u>	<u>Highest</u>	Single Life <u>Only</u>	<u>Average</u>	<u>Highest</u>	Single Life with <u>10-Years Certain</u>	<u>Average</u>	<u>Highest</u>
5-Year Pd. Cert.	\$ 1,692	\$ 1,710	Male Age 60	\$ 442	\$ 467	Male Age 60	\$ 437	\$ 460
10-Year Pd. Cert.	\$ 889	\$ 911	Fem. Age 60	\$ 420	\$ 449	Fem. Age 60	\$ 418	\$ 445
15-Year Pd. Cert.	\$ 634	\$ 653	Male Age 65	\$ 496	\$ 523	Male Age 65	\$ 489	\$ 511
20-Year Pd. Cert.	\$ 511	\$ 535	Fem. Age 65	\$ 469	\$ 495	Fem. Age 65	\$ 464	\$ 486
25-Year Pd. Cert.	\$ 435	\$ 461	Male Age 70	\$ 573	\$ 599	Male Age 70	\$ 554	\$ 584
30-Year Pd. Cert.	\$ 386	\$ 410	Fem. Age 70	\$ 535	\$ 566	Fem. Age 70	\$ 523	\$ 546
			Male Age 75	\$ 687	\$ 713	Male Age 75	\$ 641	\$ 669
			Fem. Age 75	\$ 633	\$ 667	Fem. Age 75	\$ 603	\$ 625

***Above figures are monthly income per \$100,000 non-qualified premium in a non-premium tax state.***

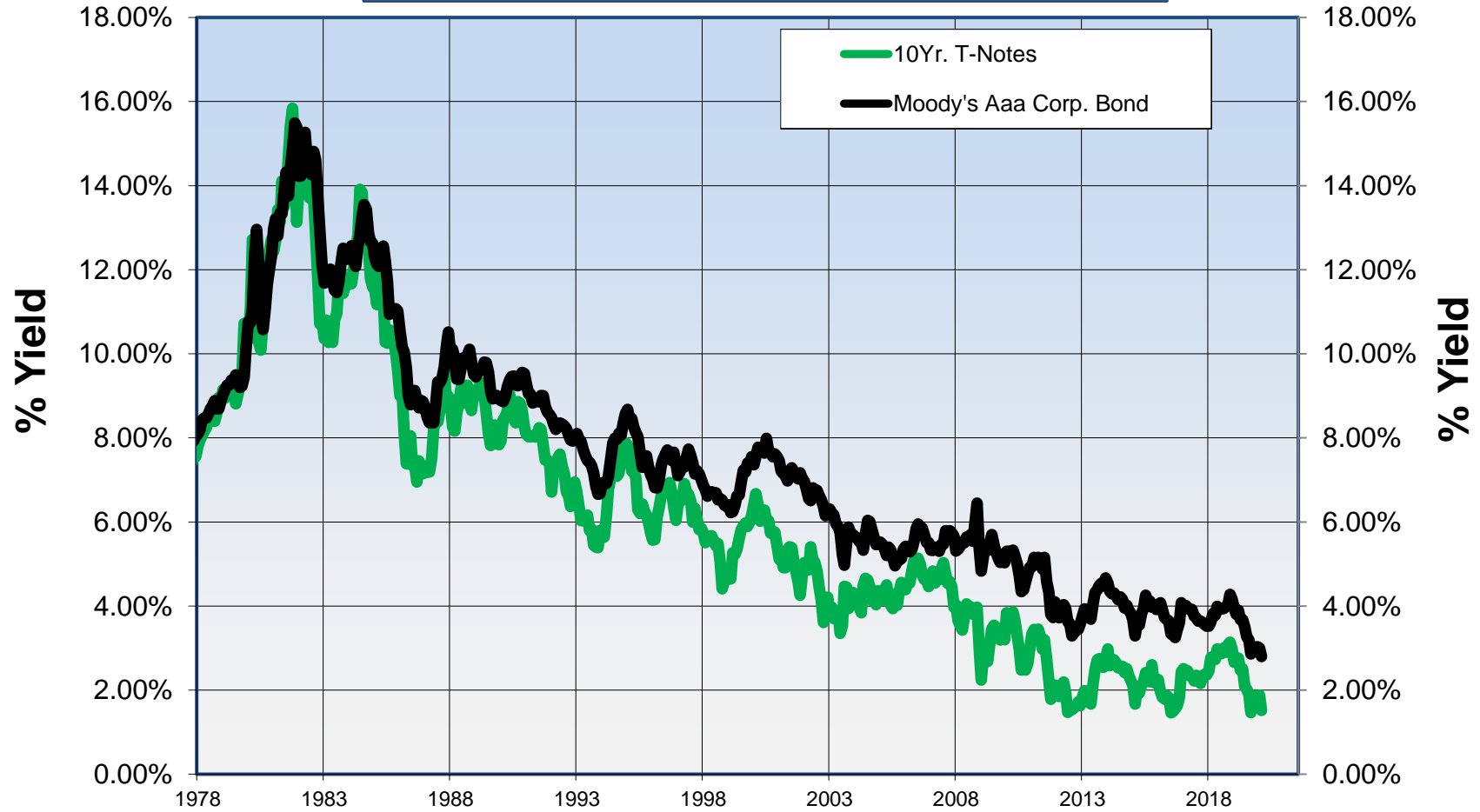
***Important Disclaimers: No warranties are made about the information published in Comparative Annuities Report. All information published in this newsletter is subject to change without notice and may vary from state to state at time of publication. This information is not intended to create public interest in the sale of annuities. You should consult with a competent financial planner to determine whether an annuity is suitable for your financial situation.***

***Comparative Annuity Report Data on SPIA annuities are quoted monthly in Kiplinger's Retirement Report.***

## Yields for Moody's AAA Corp. Bonds and 10Yr. Treasury Notes

Updated February 2020

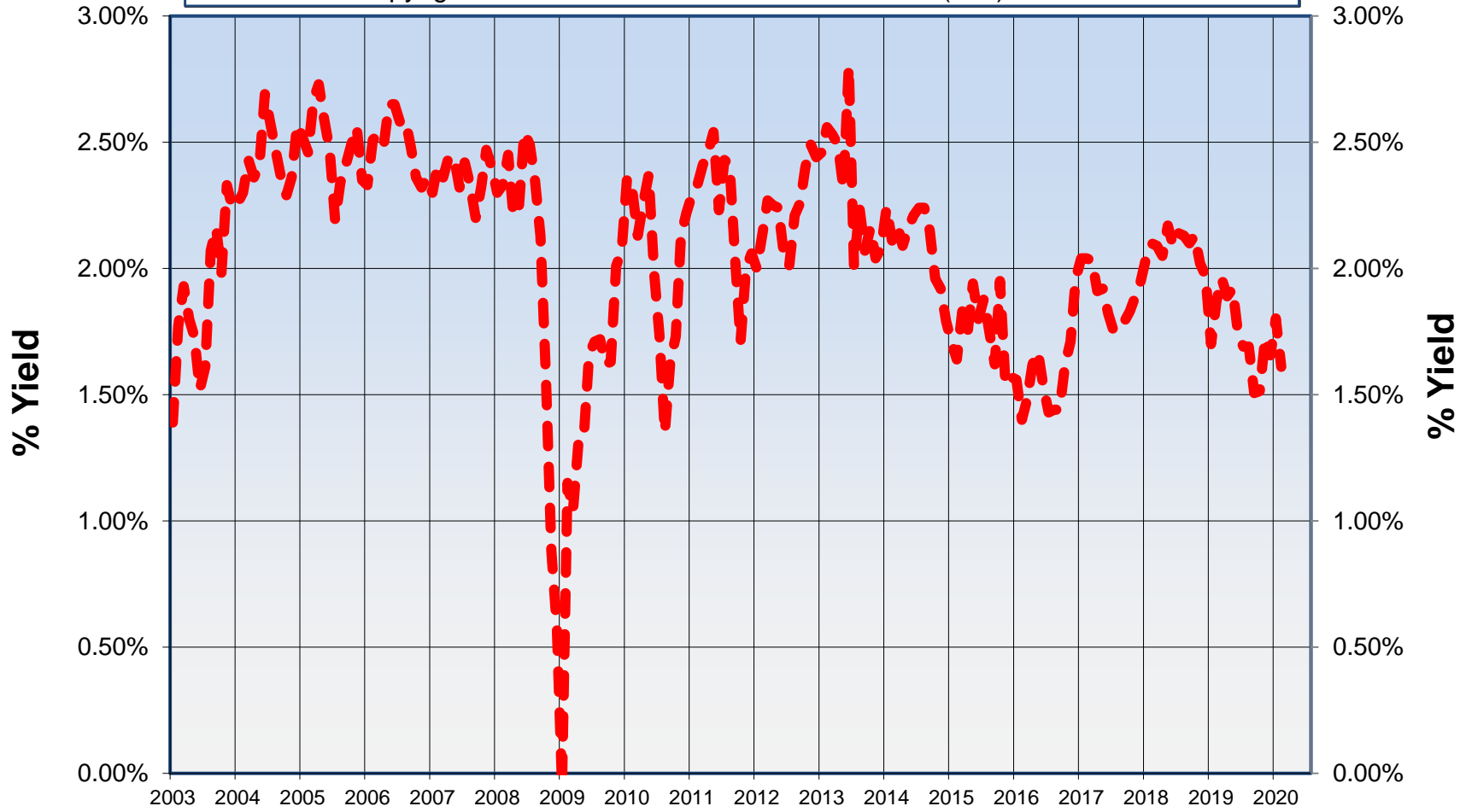
Copyright 2020 [www.ImmediateAnnuities.com](http://www.ImmediateAnnuities.com) (800) 872-6684



**Expected Inflation Rate  
10Yr. Treasury Notes minus 10Yr. TIP (Treasury Inflation Protected bond)**

Updated February 2020

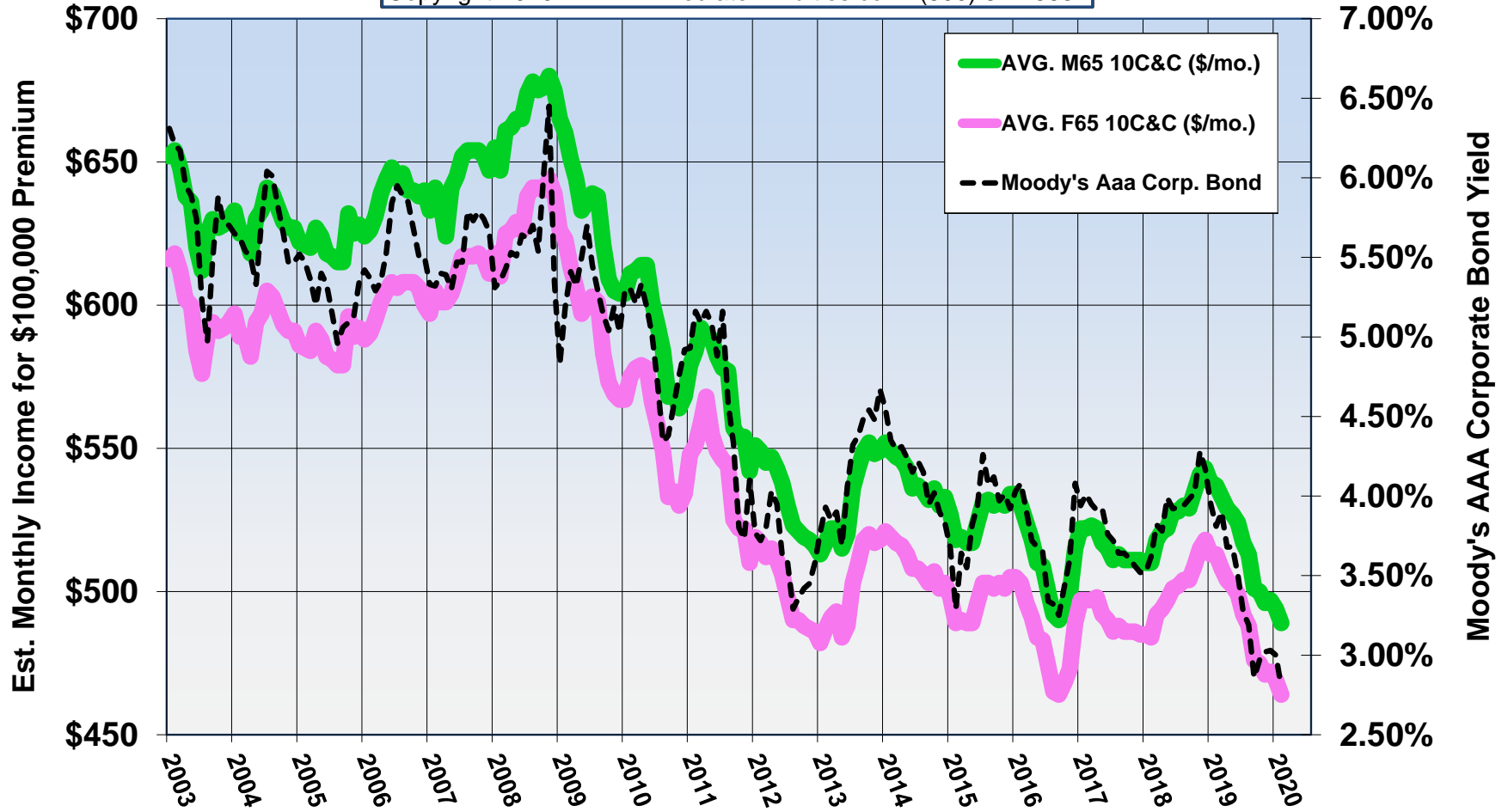
Copyright 2020 [www.ImmediateAnnuities.com](http://www.ImmediateAnnuities.com) (800) 872-6684



**Male 65 / Female 65**  
**Life & 10 Years Certain Annuity Rates**  
**and Moody's AAA Corporate Bond Yield**

Updated February 2020

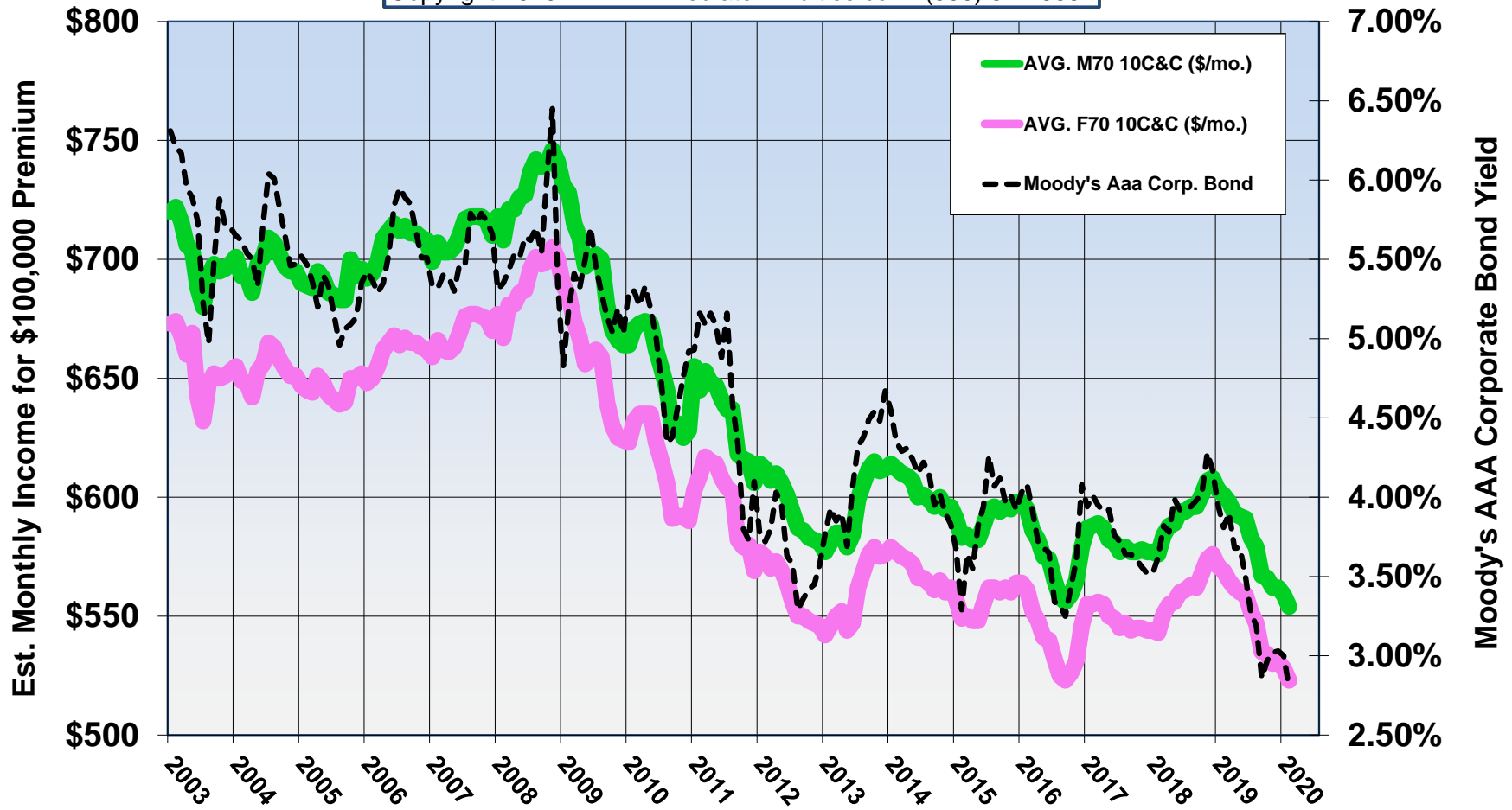
Copyright 2020 [www.ImmediateAnnuities.com](http://www.ImmediateAnnuities.com) (800) 872-6684



**Male 70 / Female 70**  
**Life & 10 Years Certain Annuity Rates**  
**and Moody's AAA Corporate Bond Yield**

Updated February 2020

Copyright 2020 [www.ImmediateAnnuities.com](http://www.ImmediateAnnuities.com) (800) 872-6684



**Male 75 / Female 75**  
**Life & 10 Years Certain Annuity Rates**  
**and Moody's AAA Corporate Bond Yield**

Updated February 2020

Copyright 2020 [www.ImmediateAnnuities.com](http://www.ImmediateAnnuities.com) (800) 872-6684

