

Comparative Annuity Reports

Vol 46 - Issue 2 - www.ImmediateAnnuities.com - February 2025 - Phone: 866-866-1999

Comparison of Immediate Annuity Payouts, © ImmediateAnnuities.com, All Rights Reserved

<i>Period (Term)</i>			<i>Single Life</i>			<i>Single Life with</i>		
<i>Certain Only</i>	<i>Highest Payout</i>	<i>Average Payout</i>	<i>Only</i>	<i>Highest Payout</i>	<i>Average Payout</i>	<i>10 Years Certain</i>	<i>Highest Payout</i>	<i>Average Payout</i>
<i>5 Year</i>	<i>\$1,844</i>	<i>\$1,810</i>	<i>Male 60</i>	<i>\$592</i>	<i>\$564</i>	<i>Male 60</i>	<i>\$587</i>	<i>\$559</i>
<i>10 Year</i>	<i>\$1,032</i>	<i>\$1,007</i>	<i>Fem. 60</i>	<i>\$577</i>	<i>\$547</i>	<i>Fem. 60</i>	<i>\$572</i>	<i>\$544</i>
<i>15 Year</i>	<i>\$782</i>	<i>\$753</i>	<i>Male 65</i>	<i>\$648</i>	<i>\$621</i>	<i>Male 65</i>	<i>\$637</i>	<i>\$611</i>
<i>20 Year</i>	<i>\$660</i>	<i>\$633</i>	<i>Fem. 65</i>	<i>\$625</i>	<i>\$596</i>	<i>Fem. 65</i>	<i>\$616</i>	<i>\$590</i>
<i>25 Year</i>	<i>\$588</i>	<i>\$565</i>	<i>Male 70</i>	<i>\$730</i>	<i>\$696</i>	<i>Male 70</i>	<i>\$708</i>	<i>\$675</i>
			<i>Fem. 70</i>	<i>\$700</i>	<i>\$662</i>	<i>Fem. 70</i>	<i>\$684</i>	<i>\$648</i>
			<i>Male 75</i>	<i>\$858</i>	<i>\$813</i>	<i>Male 75</i>	<i>\$795</i>	<i>\$761</i>
			<i>Fem. 75</i>	<i>\$799</i>	<i>\$762</i>	<i>Fem. 75</i>	<i>\$764</i>	<i>\$728</i>

Above figures are monthly income per \$100,000 non-qualified premium in a non-premium tax state.

Important Disclaimers: No warranties are made about the information published in Comparative Annuity Reports. All information published in this report is subject to change without notice and may vary from state to state at time of publication. This information is not intended to create a public interest in the sale of annuities. You should consult with a competent financial planner to determine whether an annuity is suitable for your financial situation.

Moody's Aaa Corporate Bonds and 10 Year Treasury Yields

Updated February 2025

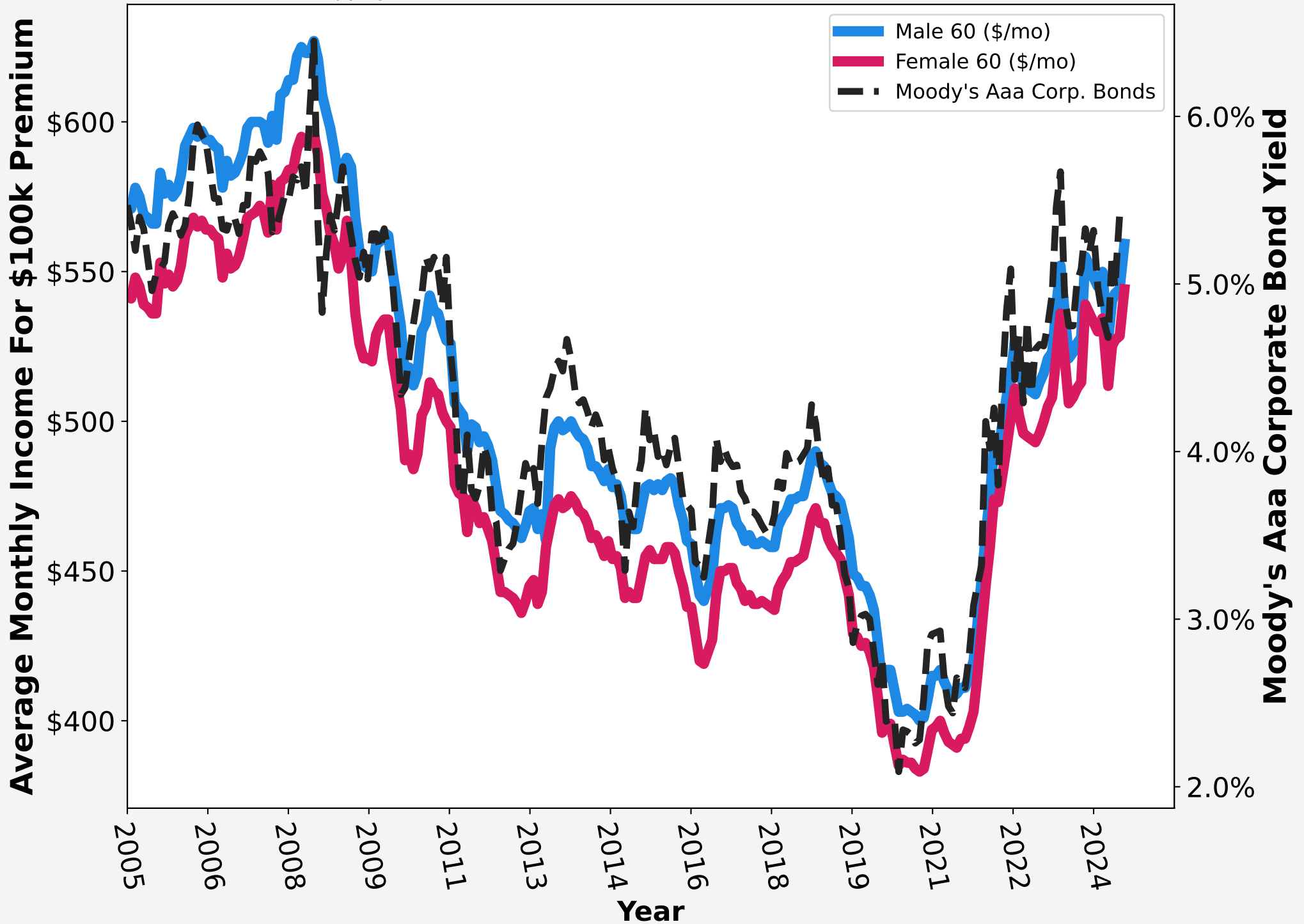
Copyright 2025 www.ImmediateAnnuities.com T: 866-866-1999



Male and Female Age 60 Life with 10 Years Certain Average Annuity Rates and Moody's Aaa Corporate Bond Yields

Updated February 2025

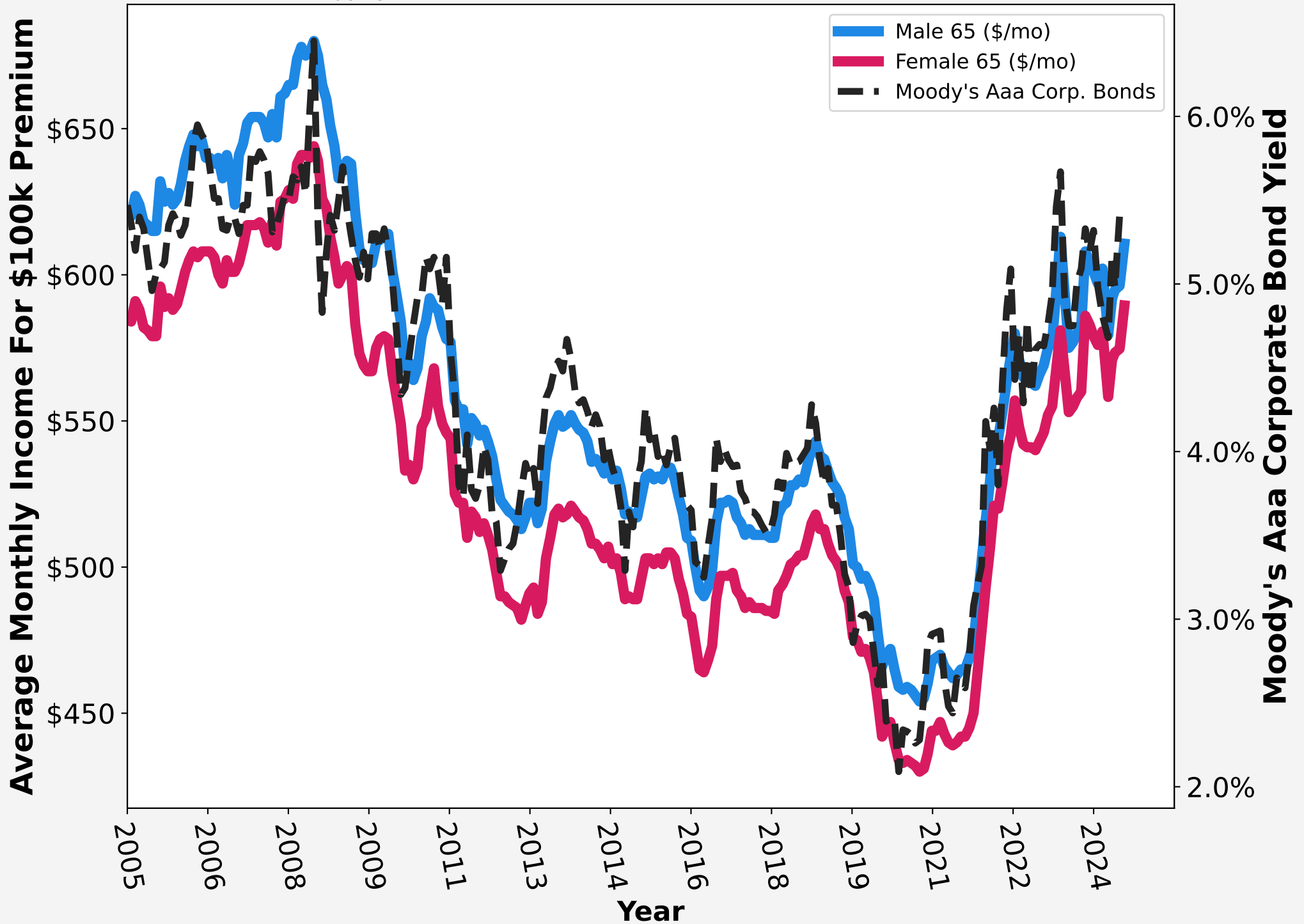
Copyright 2025 www.ImmediateAnnuities.com T: 866-866-1999



Male and Female Age 65 Life with 10 Years Certain Average Annuity Rates and Moody's Aaa Corporate Bond Yields

Updated February 2025

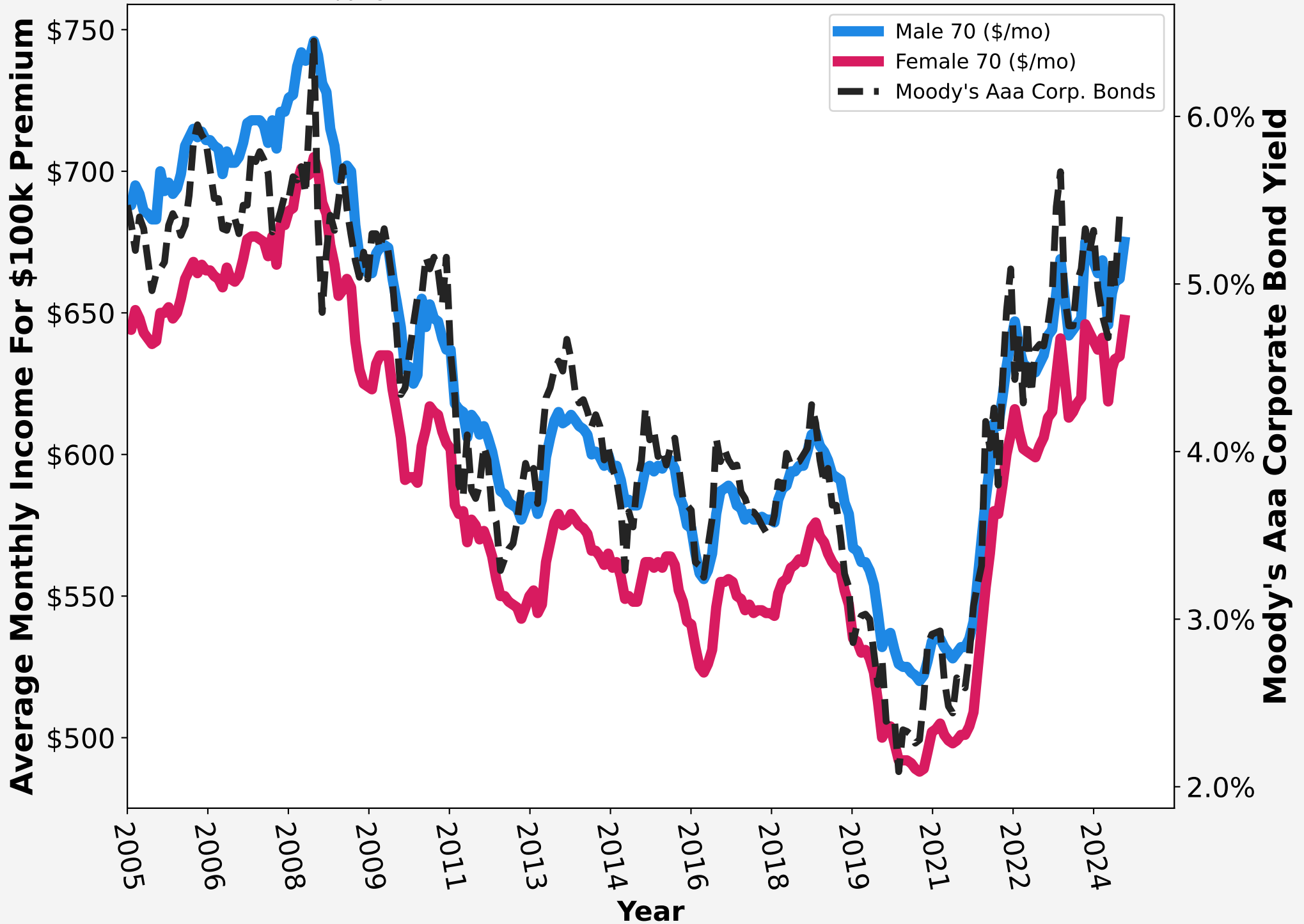
Copyright 2025 www.ImmediateAnnuities.com T: 866-866-1999



Male and Female Age 70 Life with 10 Years Certain Average Annuity Rates and Moody's Aaa Corporate Bond Yields

Updated February 2025

Copyright 2025 www.ImmediateAnnuities.com T: 866-866-1999



Male and Female Age 75 Life with 10 Years Certain Average Annuity Rates and Moody's Aaa Corporate Bond Yields

Updated February 2025

Copyright 2025 www.ImmediateAnnuities.com T: 866-866-1999

